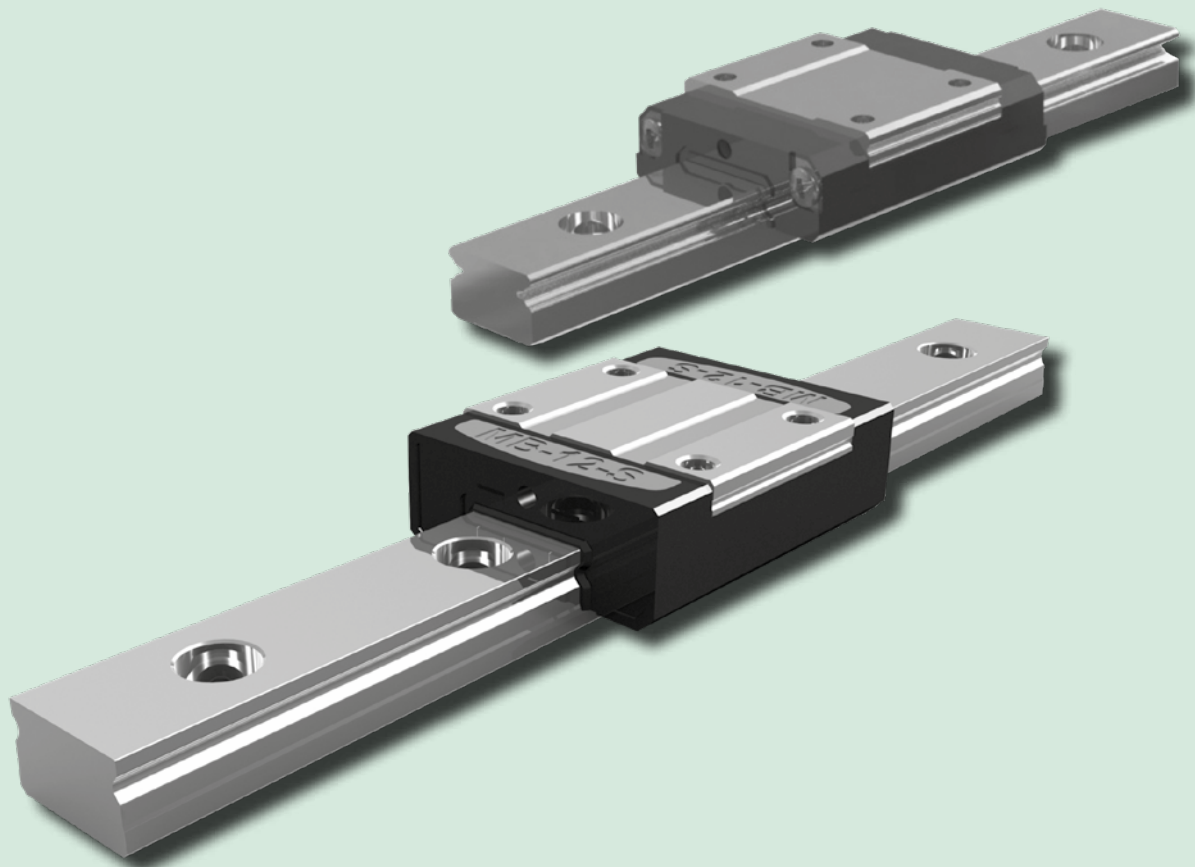


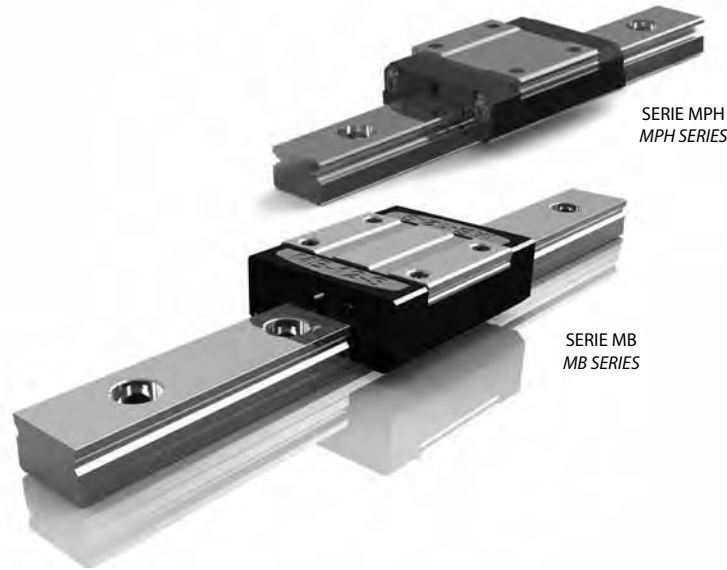
GUIDE LINEARI ISB S MIN

ISB S MIN LINEAR GUIDES



1. SERIE MB/MPH

1. MB/MPH SERIES



CODICE NUMERO MODELLO

MODEL NUMBER CODING

Tipo di carrello:
 MBX : senza gabbia
 MBC : con gabbia
 MPH : con sistema di trattenuta
 Slide type:
 MBX: non-cage
 MBC: cage
 MPH: with retainer

MBC **12** **S** **N** - **2** - **UA** - **L** **500** - **H** - **Z0** - **II** **C**

Taglia: Specifications:
 07 09 12 15 07 09 12 15

Rail type: Rail type:
 S: Standard W: Larga S: Standard Rail W: Wide rail

Versione carrello: Carriage Type:
 N: Standard L: Lungo N: Standard length L: Extended length

Numero di pattini / Number of slides

UA: Serbatoio di lubrificante (solo per MPH) / UA: Lubrication system (Only MPH)

Tipo di rotaia: Rail Type:
 L: Standard C: Fissaggio dal basso L: Standard C: bolt up from bottom

Lunghezza della rotaia / Rail Length

Classe di precisione: Precision:
 N: Normale H: Alta N: Normal H: High

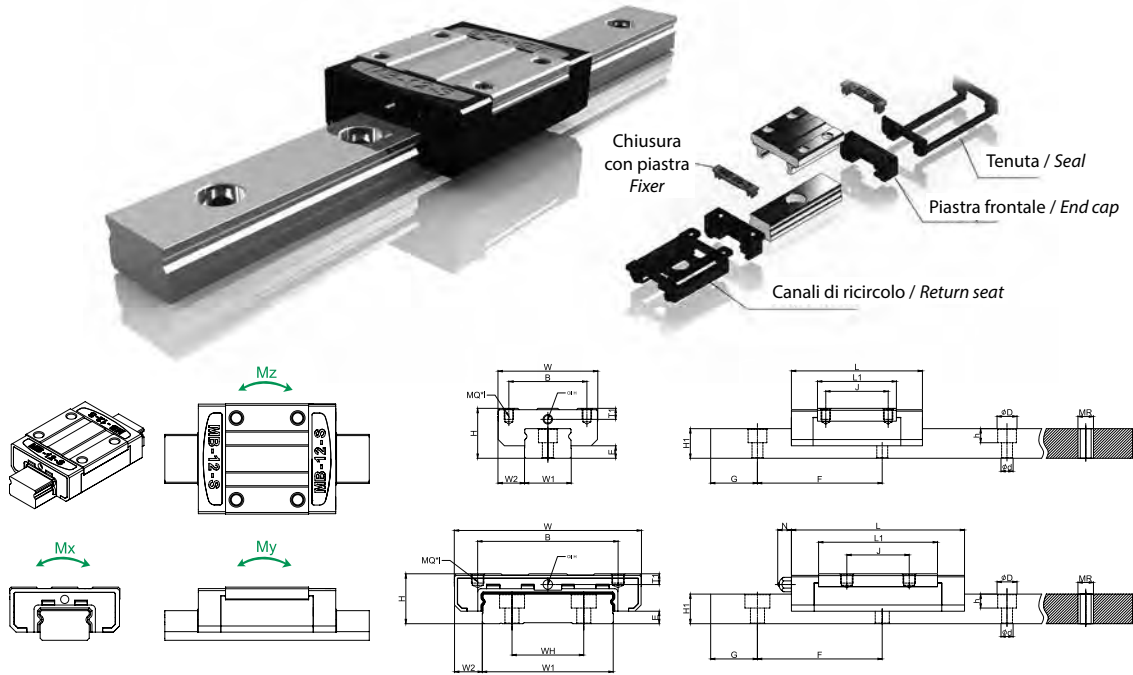
Tipo di precarico Preload Type:
 Z0: Nessun precarico Z1: Precarico leggero Z0: zero preload Z1: light preload

Due rotaie in parallelo / Two rails in parallel

Trattamento superficiale (solo per classe N): Surface Treatment (Only N):
 C: Rivestimento con cromo esavalente C: Hexavalent Chromium Coating
 D: Rivestimento con cromo trivalente D: Trivalent Chromium Coating
 R: Rivestimento con fluoruro di cromo R: Fluoride Chrome Coating
 N: Nichelatura N: Nickel Plating
 B: Brunitura B: Black Oxide
 K: Cromatura K: Black Chromium
 P: Fosfatazione P: Phosphate Coating

1.1. SERIE MB

1.1. MB SERIES



Serie MB - Tipo MBX senza gabbia

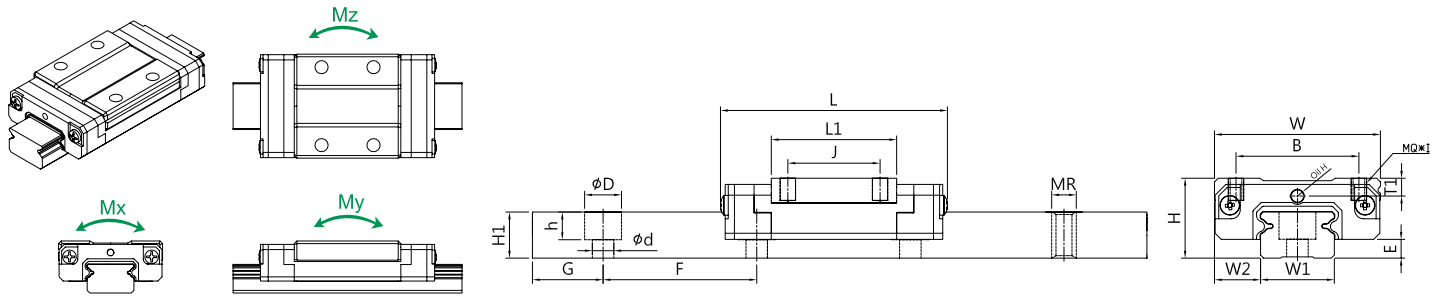
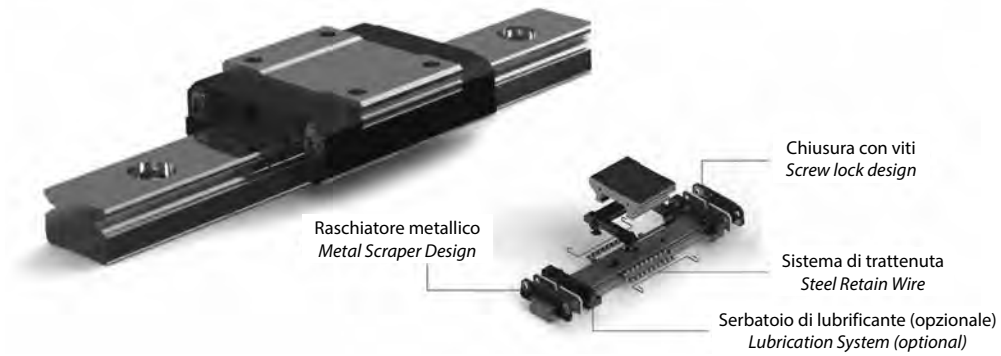
MB series - MBX non cage type

MODELLO MODEL	ASSEMBLAGGIO ASSEMBLY (mm)				CARRELLO BLOCK (mm)								ROTAIA RAIL (mm)										CAPACITÀ DI PRECARICO RATING LOAD (kN)		MOMENTO STATICO STATIC MOMENT (N·m)			PESO WEIGHT		
	H	W	W2	E	L	B	J	MQ	I	L1	Oil-H	T1	N	W1	H1	F	d	D	h	WH	G	MR	L _{max}	C	C0	M _x	M _y	M _z	Block kg	Rail kg/m
MBX09SN	10	20	5.5	2.2	30.8	15	10	M3	2.5	19.5	Ø1.5	2.4	-	9	6.05	20	3.5	6	3.3	-	7.5	M4	900	2.01	2.26	10.35	8.34	8.34	0.014	0.39
MBX09SL	10	20	5.5	2.2	40.5	15	16	M3	2.5	29.2	Ø1.5	2.4	-	9	6.05	20	3.5	6	3.3	-	7.5	M4	900	2.75	3.24	14.71	16.67	16.67	0.020	0.39
MBX12SN	13	27	7.5	2	34	20	15	M3	3.2	20.3	Ø2	3	-	12	7.25	25	3.5	6	4.25	-	10	M4	900	3.29	3.43	22.48	11.67	11.67	0.029	0.63
MBX12SL	13	27	7.5	2	47	20	20	M3	3.2	33.3	Ø2	3	-	12	7.25	25	3.5	6	4.25	-	10	M4	900	4.41	5.15	33.34	27.46	27.46	0.047	0.63
MBX15SN	16	32	8.5	4	42	25	20	M3	3.5	25.3	M3	3.5	5	15	9.5	40	3.5	6	4.5	-	15	M4	900	5.44	5.59	39.23	25.50	25.50	0.047	1.05
MBX15SL	16	32	8.5	4	59.8	25	25	M3	3.5	43.1	M3	3.5	5	15	9.5	40	3.5	6	4.5	-	15	M4	900	7.16	7.85	54.92	53.94	53.94	0.078	1.05
MBX09WN	12	30	6	3.4	39	21	12	M3	2.5	26.7	Ø1.5	2.3	-	18	7.5	30	3.5	6	4.5	-	10	M4	900	2.60	3.24	30.60	14.71	14.71	0.030	0.98
MBX09WL	12	30	6	3.4	51	23	24	M3	2.5	38.7	Ø1.5	2.3	-	18	7.5	30	3.5	6	4.5	-	10	M4	900	3.33	4.22	40.21	26.97	26.97	0.042	0.98
MBX12WN	14	40	8	3.8	44.5	28	15	M3	3.5	30.5	Ø2	3	-	24	8.7	40	4.5	6	4.5	-	15	M5	900	4.32	5.20	64.73	25.69	25.69	0.052	1.53
MBX12WL	14	40	8	3.8	59.1	28	28	M3	3.5	45.1	Ø2	3	-	24	8.7	40	4.5	6	4.5	-	15	M5	900	5.59	6.91	86.30	47.56	47.56	0.076	1.53
MBX15WN	16	60	9	4	55.5	45	20	M4	4.3	38.1	M3	3.5	5	42	9.5	40	4.5	8	4.5	23	15	M5	900	7.26	8.38	171.62	50.02	50.02	0.111	2.97
MBX15WL	16	60	9	4	74.7	45	35	M4	4.3	57.3	M3	3.5	5	42	9.5	40	4.5	8	4.5	23	15	M5	900	8.92	10.79	220.66	95.62	95.62	0.165	2.97

Serie MB - Tipo MBC con gabbia

MB series - MBC cage type

MODELLO MODEL	ASSEMBLAGGIO ASSEMBLY (mm)				CARRELLO BLOCK (mm)								ROTAIA RAIL (mm)										CAPACITÀ DI PRECARICO RATING LOAD (kN)		MOMENTO STATICO STATIC MOMENT (N·m)			PESO WEIGHT		
	H	W	W2	E	L	B	J	MQ	I	L1	Oil-H	T1	N	W1	H1	F	d	D	h	WH	G	MR	L _{max}	C	C0	M _x	M _y	M _z	Block kg	Rail kg/m
MBC09SN	10	20	5.5	2.2	30.8	15	10	M3	2.5	19.5	Ø1.5	2.4	-	9	6.05	20	3.5	6	3.3	-	7.5	M4	900	2.65	2.26	8.19	5.00	5.00	0.014	0.39
MBC09SL	10	20	5.5	2.2	40.5	15	16	M3	2.5	29.2	Ø1.5	2.4	-	9	6.05	20	3.5	6	3.3	-	7.5	M4	900	3.43	3.24	11.01	10.00	10.00	0.020	0.39
MBC12SN	13	27	7.5	2	34	20	15	M3	3.2	20.3	Ø2	3	-	12	7.25	25	3.5	6	4.25	-	10	M4	900	3.92	3.43	16.07	7.00	7.00	0.029	0.63
MBC12SL	13	27	7.5	2	47	20	20	M3	3.2	33.3	Ø2	3	-	12	7.25	25	3.5	6	4.25	-	10	M4	900	5.59	5.15	25.36	14.68	14.68	0.047	0.63
MBC15SN	16	32	8.5	4	42	25	20	M3	3.5	25.3	M3	3.5	5	15	9.5	40	3.5	6	4.5	-	15	M4	900	6.52	5.59	28.21	15.30	15.30	0.047	1.05
MBC15SL	16	32	8.5	4	59.8	25	25	M3	3.5	43.1	M3	3.5	5	15	9.5	40	3.5	6	4.5	-	15	M4	900	8.83	7.85	40.64	32.36	32.36	0.078	1.05
MBC09WN	12	30	6	3.4	39	21	12	M3	2.8	26.7	Ø1.5	2.3	-	18	7.5	30	3.5	6	4.5	-	10	M4	900	3.19	3.24	22.52	8.83	8.83	0.030	0.98
MBC09WL	12	30	6	3.4	51	23	24	M3	2.8	38.7	Ø1.5	2.3	-	18	7.5	30	3.5	6	4.5	-	10	M4	900	4.27	4.22	30.94	16.18	16.18	0.042	0.98
MBC12WN	14	40	8	3.8	44.5	28	15	M3	3.5	30.5	Ø2	3	-	24	8.7	40	4.5	8	4.5	-	15	M5	900	5.34	5.20	48.00	15.41	15.41	0.052	1.53
MBC12WL	14	40	8	3.8	59.1	28	28	M3	3.5	45.1	Ø2	3	-	24	8.7	40	4.5	8	4.5	-	15	M5	900	7.01	6.91	64.93	28.54	28.54	0.076	1.53
MBC15WN	16	60	9	4	55.5	45	20	M4	4.3	38.1	M3	3.5	5	42	9.5	40	4.5	8	4.5	23	15	M5	900	8.92	8.38	126.52	30.01	30.01	0.111	2.97
MBC15WL	16	60	9	4	74.7	45	35	M4	4.3	57.3	M3	3.5	5	42	9.5	40	4.5	8	4.5	23	15	M5	900	11.18	10.79	165.94	57.37	57.37	0.165	2.97

1.2. SERIE MPH
1.2. MPH SERIES

Serie MPH
MPH series

MODELLO MODEL	ASSEMBLAGGIO ASSEMBLY (mm)				CARRELLO BLOCK (mm)									ROTAIA RAIL (mm)										CAPACITÀ DI PRECARICO RATING LOAD (kN)				MOMENTO STATICO MOMENT (N·m)			PESO WEIGHT	
	H	W	W2	E	L	B	J	MQ	I	L1	Oil-H	T1	N	W1	H1	F	d	D	h	WH	G	MR	L _{max}	C	C0	M _x	M _y	M _z	Block kg	Rail kg/m		
MPHX07SN	8	17	5	1.5	24	12	8	M2	2.3	13	Ø1.1	1.7	-	7	4.7	15	2.4	4.5	2.4	-	5	M	450	1.02	1.26	4.97	3.05	3.05	0.009	0.25		
MPHX09SN	10	20	5.5	2.3	33.9	15	10	M3	3	20.4	Ø1.3	2.2	-	9	5.5	20	3.5	6	3.3	-	7.5	M4	900	1.93	3.42	12.87	7.04	7.04	0.019	0.3		
MPHX09SL	10	20	5.5	2.3	43.9	15	16	M3	3	30.4	Ø1.3	2.2	-	9	5.5	20	3.5	6	3.3	-	7.5	M4	900	2.67	5.47	20.02	13.64	13.64	0.027	0.3		
MPHX12SN	13	27	7.5	3.05	36.4	20	15	M3	3.5	20.4	Ø2.0	2.9	-	12	7.5	25	3.5	6	4.3	-	10	M4	900	2.87	4.80	22.58	13.55	13.55	0.033	0.60		
MPHX12SL	13	27	7.5	3.05	48.8	20	20	M3	3.5	32.9	Ø2.0	2.9	-	12	7.5	25	3.5	6	4.3	-	10	M4	900	3.92	7.40	38.39	33.20	33.20	0.05	0.60		

2. STANDARD DI PRECISIONE

2. ACCURACY STANDARDS

	N NORMALE / NORMAL	H ALTA / HIGH
Tolleranza sull'altezza (H) <i>Dimensional tolerance of height (H)</i>	±0.04	±0.02
Tolleranza sulla larghezza (W) <i>Dimensional tolerance of width (W)</i>	±0.04	±0.025
Variazione sull'altezza (ΔH) <i>Variation of heights (ΔH)</i>	0.03	0.015
Variazione sulla larghezza (ΔW) <i>Variation of widths (ΔW)</i>	0.03	0.02
Parallelismo della superficie C rispetto alla A <i>Running Parallelism of Block surface C with respect to surface A</i>	ΔC vedi fig. 1-1 e 1-2 ΔC Refer to Fig. 1-1, 1-2	
Parallelismo della superficie D rispetto alla B <i>Running Parallelism of Block surface D with respect to surface B</i>	ΔD vedi fig. 1-1 e 1-2 ΔD Refer to Fig. 1-1, 1-2	

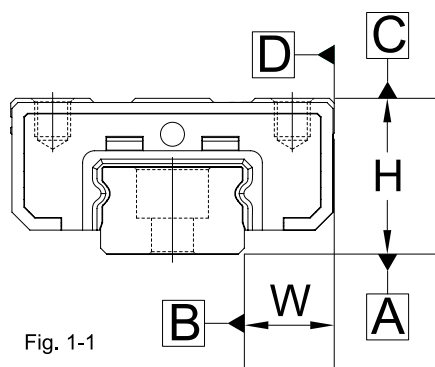


Fig. 1-1

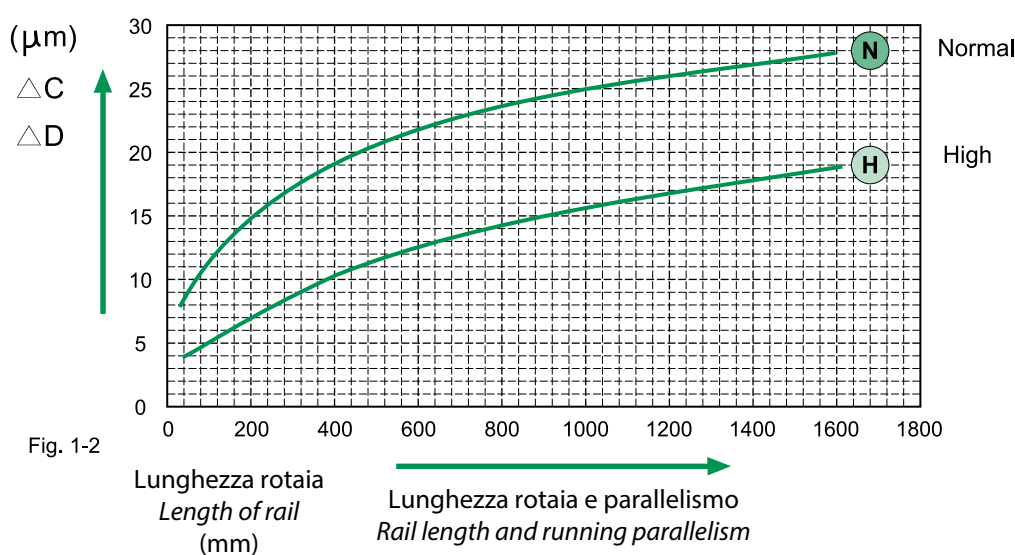


Fig. 1-2

